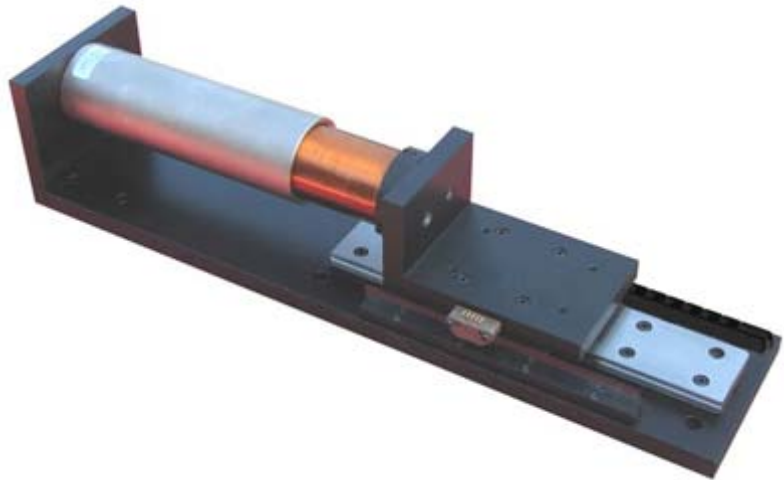


Voice Coil Driven Stage

The Voice Coil Driven Linear Actuator is used in positioning applications where high speed and high accuracy are required. The stage may be used in the following industries; Semiconductor, Disk Drive, Automotive, Medical, Industrial, Optical, Test and Manufacturing.



The non-commutated motor construction increases reliability. The direct coupling of the motor to the stage allows for fast acceleration / deceleration and high speed operation.

The Voice Coil Stages do not need commutation and using a position sensor, positioning resolutions of less than one micron or 0.00004 inches are achievable.

Customized solutions can be provided upon request.

Features

- Features
- Low Cost
- High Speed Positioning
- Compact Package
- Integrated Position Feedback Sensor
- High Force Generation
- Horizontal or Vertical Operation

Typical Applications

- Automatic Assembly
- Bonding Machine
- Chip Inserter
- Connector Pin Insertion
- Disk Drive Assembly
- Glass Cutting
- Glue Dispensing Machine
- Grease Dispensing Machine
- Height Gage
- Labeling Machine
- Laser Cutting
- Latch Inspection
- Lens Polishing
- Medical Assembly
- Pick and Place
- Robotics
- Screen Printing
- Screw Adjusting
- Spot Welding
- Stacking of Components
- Switch Assembly
- Switch Testing
- Tension Control
- Tire Trimming
- Wafer Transport
- Welding

motiCont

MotiCont
6901 Woodley Avenue
Van Nuys, California 91406, USA
www.MotiCont.com

Phone (888) 785-1804
+1 (818) 785-1800
FAX +1 (818) 785-5713
MotiCont@MotiCont.com

Motor Specifications

VCDS-051-051-01

PARAMETER	VALUE	UNIT	VALUE	UNIT
INTERMITTENT FORCE @ 10% DUTY CYCLE	88.6	N	19.9	LB
CONTINUOUS FORCE	28.0	N	6.3	LB
FORCE CONSTANT	8.0	N / Amp	1.8	LB / Amp
BACK EMF CONSTANT	8.0	Volts / Meter / sec	0.20	Volts / inch / sec
STROKE	19.1	mm	0.75	inch
COIL ASSY. MASS	120	GR	4.23	OZ
COIL RESISTANCE	2.7		Ohm	
COIL INDUCTANCE @ 120 Hz	3.3		mH	
MAX CONTINUOUS POWER	33		Watt	

VCDS-051-064-01

PARAMETER	VALUE	UNIT	VALUE	UNIT
INTERMITTENT FORCE @ 10% DUTY CYCLE	92.9	N	20.9	LB
CONTINUOUS FORCE	29.4	N	6.6	LB
FORCE CONSTANT	9.6	N / Amp	2.2	LB / Amp
BACK EMF CONSTANT	9.6	Volts / Meter / sec	0.24	Volts / inch / sec
STROKE	31.8	mm	1.25	inch
COIL ASSY. MASS	150	GR	5.3	OZ
COIL RESISTANCE	3.9		Ohm	
COIL INDUCTANCE @ 120 Hz	4.6		mH	
MAX CONTINUOUS POWER	36		Watt	



MotiCont
6901 Woodley Avenue
Van Nuys, California 91406, USA
www.MotiCont.com

Phone (888) 785-1804
+1 (818) 785-1800
FAX +1 (818) 785-5713
MotiCont@MotiCont.com

VCDS-051-089-01

PARAMETER	VALUE	UNIT	VALUE	UNIT
INTERMITTENT FORCE @ 10% DUTY CYCLE	82.7	N	18.6	LB
CONTINUOUS FORCE	26.2	N	5.9	LB
FORCE CONSTANT	10.1	N / Amp	2.3	LB / Amp
BACK EMF CONSTANT	10.1	Volts / Meter / sec	0.26	Volts / inch / sec
STROKE	57.2	mm	2.25	inch
COIL ASSY. MASS	195	GR	6.9	OZ
COIL RESISTANCE	6.0		Ohm	
COIL INDUCTANCE @ 120 Hz	6.8		mH	
MAX CONTINUOUS POWER	40		Watt	

VCDS-051-165-01

PARAMETER	VALUE	UNIT	VALUE	UNIT
INTERMITTENT FORCE @ 10% DUTY CYCLE	68.1	N	15.3	LB
CONTINUOUS FORCE	21.5	N	4.8	LB
FORCE CONSTANT	10.6	N / Amp	2.4	LB / Amp
BACK EMF CONSTANT	10.6	Volts / Meter / sec	0.27	Volts / inch / sec
STROKE	133.4	mm	5.25	inch
COIL ASSY. MASS	340	GR	12.0	OZ
COIL RESISTANCE	12.2		Ohm	
COIL INDUCTANCE @ 120 Hz	13.0		mH	
MAX CONTINUOUS POWER	50		Watt	

All Values at 25 °C.



MotiCont
 6901 Woodley Avenue
 Van Nuys, California 91406, USA
www.MotiCont.com

Phone (888) 785-1804
 +1 (818) 785-1800
 FAX +1 (818) 785-5713
MotiCont@MotiCont.com

Optical Encoder

Pin Assignment and Description

PIN	DESCRIPTION
1	Ground
2	Ground
3	Index-
4	Index+
5	Phase-A-
6	Phase-A+
7	+5VDC Power
8	+5VDC Power
9	Phase-B-
10	Phase-B+

Electrical Specifications

PARAMETER	Min.	Typ.	Max.	UNIT	Note
Supply Voltage	4.5	5.0	5.5	Volts	
Current Consumption (500 CPI)	-	55	57	mA	No load
Current Consumption (All Other Resolutions)	-	27	30	mA	No load
Output Voltage Sourcing to +5	2.4	3.4	-	Volts	@ -20mA
Output Voltage Sinking to Ground	-	0.4	0.8	Volts	@ 20mA



MotiCont
6901 Woodley Avenue
Van Nuys, California 91406, USA
www.MotiCont.com

Phone (888) 785-1804
+1 (818) 785-1800
FAX +1 (818) 785-5713
MotiCont@MotiCont.com

4

3

2

1

REVISIONS

ZONE	LETTER	DESCRIPTION	DATE	CHECKED	APPROVED
------	--------	-------------	------	---------	----------

D

D

C

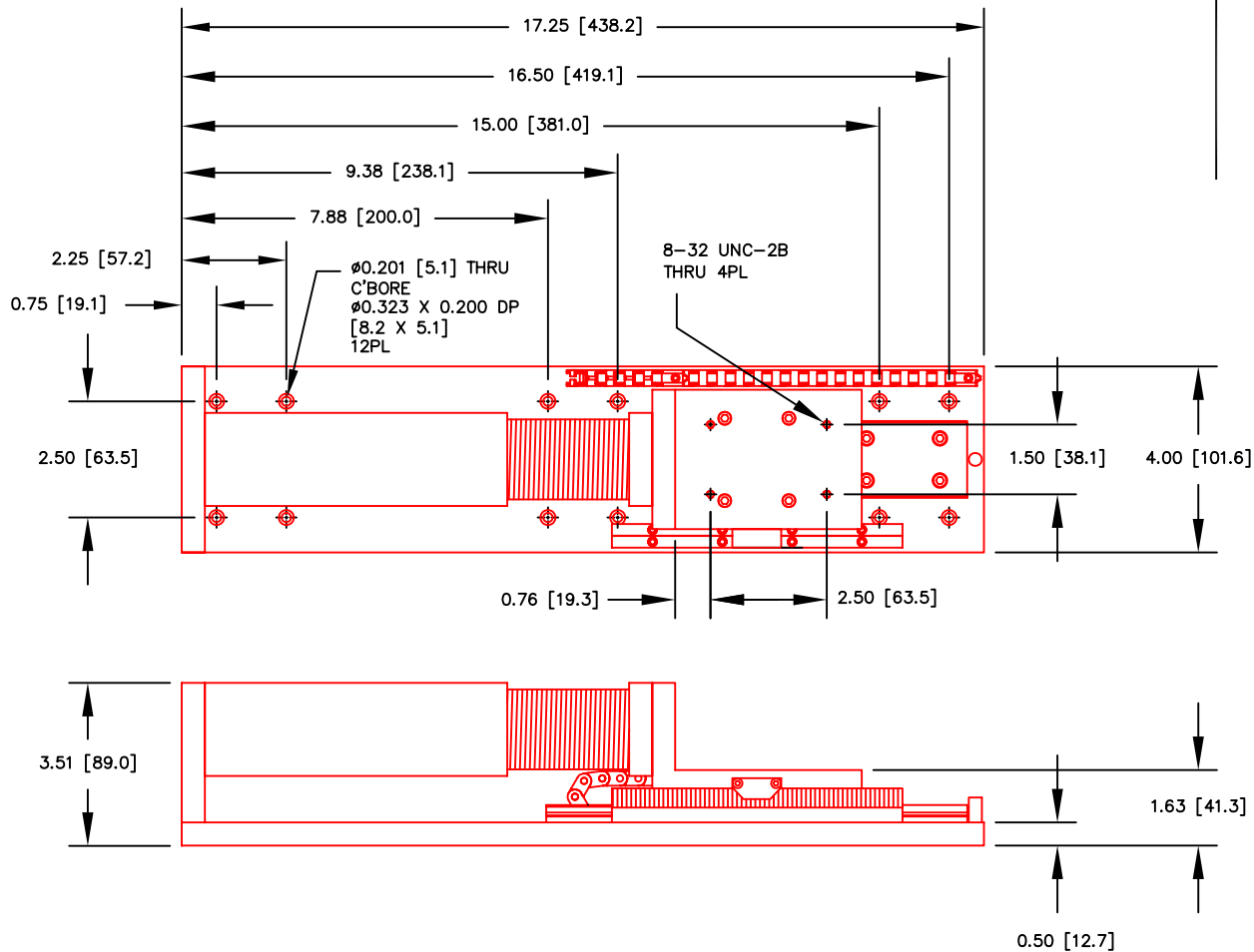
C

B

B

A

A



THIS DOCUMENT, WHETHER OR NOT MARKED AS PROPRIETARY, IS CONSIDERED CONFIDENTIAL AND SHALL REMAIN THE PROPERTY OF MOTICONT AND SHALL BE RETURNED TO MOTICONT UPON REQUEST WITH ALL COPIES MADE THEREOF. THIS DOCUMENT CANNOT BE UTILIZED IN THE MANUFACTURE OF ARTICLES SOLD OR OFFERED OR DISCLOSED TO ANYONE AND NO USE OF IT CAN BE MADE UNLESS EXPRESSLY AUTHORIZED BY AND UNDER THE DIRECTION OF MOTICONT. POSSESSION OF THIS DOCUMENT IS ACCEPTED SUBJECT TO THE FOREGOING.

NOTES :
UNLESS OTHERWISE SPECIFIED

DIMENSIONS ARE IN INCHES (mm) TOLERANCES ON:	
DECIMALS	FRACTIONS
.XXX .XX	$\pm 1/125 \pm 1/2'$
$\pm .005 \pm .01$	UNLESS OTHERWISE SPECIFIED
USED ON	NEXT ASSY
APPLICATION	

MATERIAL

CONTRACT

motiCont

FINISH

DRN

CHKD

APPVD

APPVD

VOICE COIL DRIVEN STAGE

SIZE
A

CODE

DWG. NO.

VCDS-165-01

REV. 1

SCALE: 1 / 4

SHEET 1 OF 1

4

3

2

1